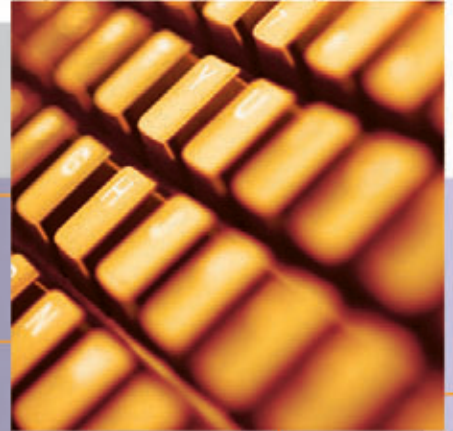




IMAGE FILING SOLUTIONS



MS-SERIES
FULL LINE BROCHURE

Microfilm Scanner 800II



HIGH-PERFORMANCE DIGITAL MICROFILM SCANNING

- High-speed, three-second scanning
- Easy-to-read, ledger-sized screen
- User-friendly control panel with motorized zoom lens and image rotation
- Hi-Speed USB Connection



Specifications

Type:	Desktop Digital Microfilm Reader/Scanner
Item Number:	2264B002
Film Formats:	Universal with Interchangeable Carriers
Film Types:	Both Negative and Positive Images of Silver or Diazo 16mm/35mm Film, Aperture Cards, and Microfiche
Lens Magnification:	7-7.5x, 9-16x, 14-30x, 20-50x, 57x
Screen Size (H x W):	11.8" x 17"
Scan Resolution:	Up to 600 dpi
Scan Modes:	Black and White, Black and White Fine, Black and White Photo, Grayscale
Scan Size:	11" x 17", 11" x 14", 8-1/2" x 11", 8-1/2" x 5-1/2"
Scan Position:	Center, Left, Two Consecutive Pages
Scan Speed:	3 Seconds (8-1/2" x 11") 3.9 Seconds (11" x 17")
Scan Options:	Trimming, Auto Border Erasure
Interface:	SCSI-II, Hi-Speed USB 2.0 and Video Printer I/F Standard
Dimensions (H x W x D):	30" x 24" x 24"
Weight:	104 lb.
Power Consumption:	203W
Bundled Software:	ISIS/TWAIN Drivers, Scanning Utility 800, Canon CapturePerfect 1.0
Other Features:	Auto Focus with Manual Override Auto Exposure with Manual Override Motorized Zoom Lens with Programmable Memory Keys Automatic 90° Rotation Automatic Bimode Sensing with Manual Override (N-P/P-P) Automatic Border Erasure Automatic Centering
Options:	Fileprint 470, Workstation II, Workstation V, Lenses (7-7.5x, 9-16x, 14-30x, 20-50x, 57x), Framing Kit, Fiche Carrier 190R-II, Roll Fiche Carrier 200, Autocarrier 100C, FS Controller 1, Installation Kit P, Foot Switch II, Keyboard, image.Scan Software, eCopy Software



Microfilm Scanner 300II/350II

Specifications

Type:	Desktop Digital Microfilm Reader/Scanner
Item Number:	MS-300II (2266B002)
	MS-350II (2265B002)
Film Formats:	Universal with Interchangeable Carriers
Film Types:	Both Negative and Positive Images of Silver or Diazo 16mm/35mm Film, Aperture Cards, and Microfiche
Lens Magnification:	7x, 9.5-16x, 16-32x, 30-55x, 10-24x (MS-300II only), 20-48x (MS-350II only)
Screen Size (H x W):	11.8" x 11.8"
Scan Resolution:	Up to 600 dpi
Scan Modes:	Black and White, Error Diffusion, Text Enhanced, Grayscale
Scan Size:	11" x 14", 8-1/2" x 11"
Scan Speed:	5.5 Seconds (8-1/2" x 11")
Scan Options:	Trimming, Auto Border Erasure
Image Adjustment:	Rotation, Focus, Zoom
	MS-300II (Manual)
	MS-350II (Motorized)
Interface:	SCSI-II and Hi-Speed USB 2.0
Dimensions (H x W x D):	26.3" x 17.4" x 21.3"
Weight:	57.3 lb.
Power Consumption:	250W
Bundled Software:	ISIS/TWAIN Drivers, Canon CapturePerfect 1.0
Other Features:	Auto Exposure with Manual Override Motorized Zoom Lens (MS-350II only) Automatic 90° Rotation (MS-350II only) Automatic Bimode Sensing with Manual Override (N-P/P-P) Automatic Border Erasure
Options:	Fileprint 270, Fileprint 470, DMP Board, Workstation II, Workstation V, Lenses (7x, 9.5-16x, 16-32x, 30-55x, 10-24x, 20-48x), Framing Kit, Fiche Carrier 190RII, Roll/Fiche Carrier 200, Autocarrier 100C, FS Controller I, Installation Kit P, image.Scan Software, eCopy Software



COST-EFFECTIVE DESKTOP MICROFILM SCANNING

- Fast, 5.5-second scanning
- Standard motorized remote control (MS-350II only)
- Hi-Speed USB Connection



PUT HISTORY AT YOUR FINGERTIPS

OPTIONS AND ACCESSORIES

Fileprint 470

Type:	Desktop Laser Printer
Item Code:	1514B002
Print Speed (LTR):	12 ppm on MS-300II/350II 15 ppm on MS-800II
Resolution:	600 dpi
Stacker Capacity:	250 Sheets
Paper Size:	Letter, Legal, 11" x 17"
Dimensions (H x W x D):	10.9" x 20.4" x 17.3"
Weight:	42.5 lb.
Power Consumption:	Average 360W or Less (Energy-Saving Mode: 36W or Less)

Note: DMP Board required for use with MS-300II/350II



Fileprint 270

Type:	Desktop Laser Printer
Item Code:	1304B005
Print Speed (LTR):	13 ppm
Resolution:	600 dpi
Stacker Capacity:	100 Sheets
Paper Size:	Letter, Legal
Dimensions (H x W x D):	8.5" x 14.6" x 9.9"
Weight:	12.57 lb.
Power Consumption:	Average 266W or Less (Energy-Saving Mode: 3.4W or Less)

Note: DMP Board required for use with MS-300II/350II



WORKSTATIONS



Workstation II

Extension Board

Workstation V



Workstation II

Item Code:	3692A001
Dimensions (H x W x D)	27.5" x 20" x 30"

Workstation V

Item Code:	0190V289
Dimensions (H x W x D)	27.5" x 24" x 39" (Standard) 27.5" x 38" x 39" (With Optional Extension Board)

Workstation V Extension Board

Item Code:	0190V290
Dimensions (W x D)	14" x 13"

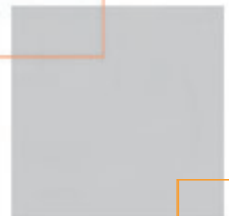
THE UNDENIABLE ADVANTAGE OF MICROFILM

With a life expectancy of over 100 years, microfilm provides a long-term archival medium that withstands the test of time.

The Canon MS-Series Digital Microfilm Scanners deliver a reliable, low-cost way to view, scan, print, and, distribute high-quality microfilm images. Designed to meet today's digital imaging needs, the Canon MS-Series devices offer great versatility, easy connectivity, and user-friendly operation.

Renowned for optimized performance and reliability, the Canon line of digital microfilm scanners—including the MS-800II, MS-350II, and MS-300II models—offers the following advantages:

- **Easy Operation**—Helps ensure that dedicated or walk-up users and those with disabilities can use the MS-Series Scanners to conveniently access microfilm or microfiche.
- **Reader-Printer Capabilities**—Provide flexibility for scan-to-print applications. These devices can be configured to connect directly to a Canon Fileprint laser printer, without the need for a PC connection or an existing local/network printer.
- **Interchangeable Film Carriers**—Enable the MS-Series Scanners to handle all film/fiche formats, including 16mm/35mm open reels, 16mm cartridges, microfiche, and aperture cards.
- **Bundled Software**—Includes ISIS®/TWAIN drivers and Canon CapturePerfect software for MS-300II/350II/800II and Scanning Utility 800 Software for MS-800II.



LENSES

MS-800II

7-7.5x Zoom	3678A001
9-16x Zoom	3678A002
14-30x Zoom	3678A003
20-50x Zoom	3678A004
57x Zoom	3678A005

MS-300II

Fixed 7x Lens	3677A006
EZ01 - 9.5-16x Zoom	3677A001
EZ02 - 16-32x Zoom	3677A002
EZ03 - 30-55x Zoom	3677A004
EZ04 - 10-24x Zoom	3677A007

MS-350II

Fixed 7x Lens	3680A004
HZ01 - 9.5-16x Zoom	3680A001
HZ02 - 16-32x Zoom	3680A002
HZ03 - 30-55x Zoom	3680A003
HZ04 - 20-48x Zoom	3680A006

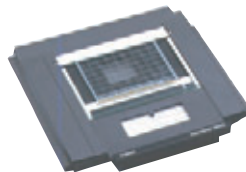
ADDITIONAL ACCESSORIES

Framing Kit for MS-800II	3686A002
Framing Kit for MS-300II/350II	3685A001
DMP Board for MS-300II/350II	8541A003
FP Cartridge 270 for FP270	1303B001
FP Cartridge 470 for FP470	1515B001
Sensor Unit 1 for FS C-1	3662A007
Sensor Unit 2 for FS C-1	3662A008
Sensor Unit 1C for FS C-1	3662A009
Sensor Unit 2C for FS C-1	3662A010
Installation Kit P for RFC200/AC100C/FSC-1	3672A004
Foot Switch II	3682A004
Keyboard for MS-800II	3686A001

ISIS is a trademark of EMC Corporation. The USB-IF Logos are trademarks of Universal Serial Bus Implementers Forum, Inc. CANON is a registered trademark of Canon Inc. in the United States and may also be a registered trademark or trademark in other countries. IMAGEANYWARE is a trademark of Canon. All referenced product names and other marks are trademarks of their respective owners. Specifications and availability subject to change without notice. ©2007 Canon U.S.A., Inc. All rights reserved.

FILM CARRIERS

Fiche Carrier 190RII
(3659A004)



Autocarrier 100C
(3661A001)**



Roll/Fiche Carrier 200
(3660A001)**



FS Controller I
(3662A001)**



** Autocarrier 100C, FS Controller I, and Roll/Fiche Carrier 200 require optional Installation Kit P.

Canon
*image*ANYWARE

1-800-OK-CANON
www.usa.canon.com

Canon U.S.A., Inc.
One Canon Plaza
Lake Success, NY 11042

0101W311
0607R-MSFL-7.5M-DTM

PRINTED ON RECYCLED
PAPER IN THE U.S.A.

