

FORMAX®

Div. of BESCORP, Inc.

6202 Series

FOR FOLDING & INSERTING

Standard Features

- One or two fully-automatic sheet feeders
- One automatic insert/BRE feeder - FD 6202 Advanced 1 & 2
- AutoSet™ one-touch setup
- Clamshell design for easy access
- Fully automatic adjustments
- Nine programmable fold applications
- User-friendly display for easy setup
- Seal and non-seal capabilities
- Two counters: One resettable for addition and batch counting and one non-resettable
- Four adjustable insert fingers
- Double document detection
- Folds and inserts up to five sheets of paper
- Fold types: C, V, Z, and Double Parallel

Abilities:

- Folds and/or inserts sheets, business reply envelopes and cards automatically in almost any combination
- Multifeeding: Allows for a set number of pieces (1-3) to be pulled from one feeder, then collated, folded and inserted automatically
- Folding only without inserting
- Daily post mode for inserting stapled sets

Options:

- OMR: Optical Mark Recognition (FD 6202 Advanced 2 Only)
- Right or Left Side Exit Tray
- Short Feed Trays
- Cabinet Stand
- 400 Series Jogger - Reduces static electricity from forms and aligns them for proper feeding

Formax a Division of Bescorp, Inc.

New Hampshire, USA

Web Site: www.formax.com

LOCAL DEALER:



Shown with optional Side Exit Tray and Cabinet

The Advanced Office Mailing Solution

The 6202 Series brings advanced folding & inserting technology and flexibility to the office environment. The unique AutoSet™ feature allows for one-touch setup of new jobs by automatically measuring paper lengths, envelope sizes and fold lengths. Recurring and frequent jobs run in AutoSet™ can also be stored as a programmed job setting for hassle-free setup and operation. The powerful folding system enables the 6202 Series to accurately fold up to five sheets of paper at the same time.

Three configurations are available to meet your processing needs: the FD 6202-Basic 2, FD 6202-Advanced 1, and FD 6202-Advanced 2. The FD 6202-Basic 2 model is equipped with two automatic sheet feeders. The FD 6202-Advanced 1 model comes with one sheet feeder and one insert/BRE feeder. The FD 6202-Advanced 2 comes with two sheet feeders and one insert/BRE feeder.

The 6202 Series Inserters offer the power and reliability of larger machines with the ease of operation expected and needed for the office environment.

Flexible

The 6202 Series is available in three models to meet your specific processing needs. A variety of documents up to 14" long, including checks, invoices, newsletters and reply envelopes can be inserted in almost any combination. An optional left or right side exit tray can be added to maximize operator productivity. The daily mail feature allows for various mailings to be processed in stapled and non-stapled sets.

Powerful

The 6202 Series processes at a rate of up to 2,200 pieces per hour and can handle up to 325 sheets in each feeder. Feeders can be refilled on-the-fly allowing for continuous operation. The cascade mode maximizes production of the models with two sheet feeders by filling both feeders with the same documents. When one feeder empties the other automatically starts feeding. This feature allows for a total stacking capacity of up to 650 sheets. The enhanced folding system is capable of folding and inserting up to five documents at one time.

Secure

The 6202 Series has double document detectors located at each feed station to ensure document integrity. The optional OMR software and hardware (available on the FD 6202-Advanced 2 only) allow for the insertion of varying multiple page documents automatically. OMR determines which documents go together into each envelope, eliminating the tedious task of manually collating and inserting.

Easy to Operate

The AutoSet™ feature automatically detects and sets paper length, fold type, envelope size, fold length and double document detection. Simply load the documents into the feed hoppers and go. The 6202 Series also includes nine programmable fold settings for recurring or frequently processed applications. The drop-in feed system and easy-access paper paths increase efficiency and maximize output.

Specifications:

Speed:	Up to 2,200 pieces per hour
Feed Hoppers:	Up to 325 sheets or approx. 45 BRE's
Envelope Hopper:	Up to 250 envelopes
Paper Size*:	Sheet Feeder: 3.5" - 14" L x 5.1" - 9" W Insert/BRE Feeder: 3.5" - 6" L x 5.1" - 9" W
Envelope Size*:	3.5" - 6.38" L x 5.5" - 9.5" W
Duty Cycle:	Up to 15,000 per month
Dimensions:	16.5" W x 53" L x 26" H
Weight:	Approx. 200 lbs.
Voltage:	100 - 120 Volts (50/60 Hz)
Safety Certifications:	UL

* All paper & envelope specifications may vary. All media must be tested.



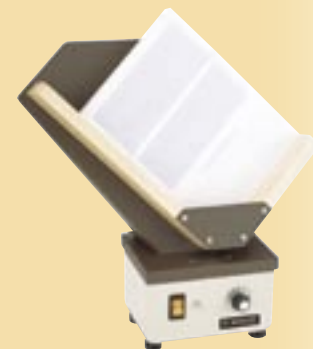
User friendly control panel



Side Exit Tray



2 sheet feeders and 1 insert/BRE feeder



A **400 Series Jogger** is a recommended option that reduces static electricity from forms and aligns them for proper feeding